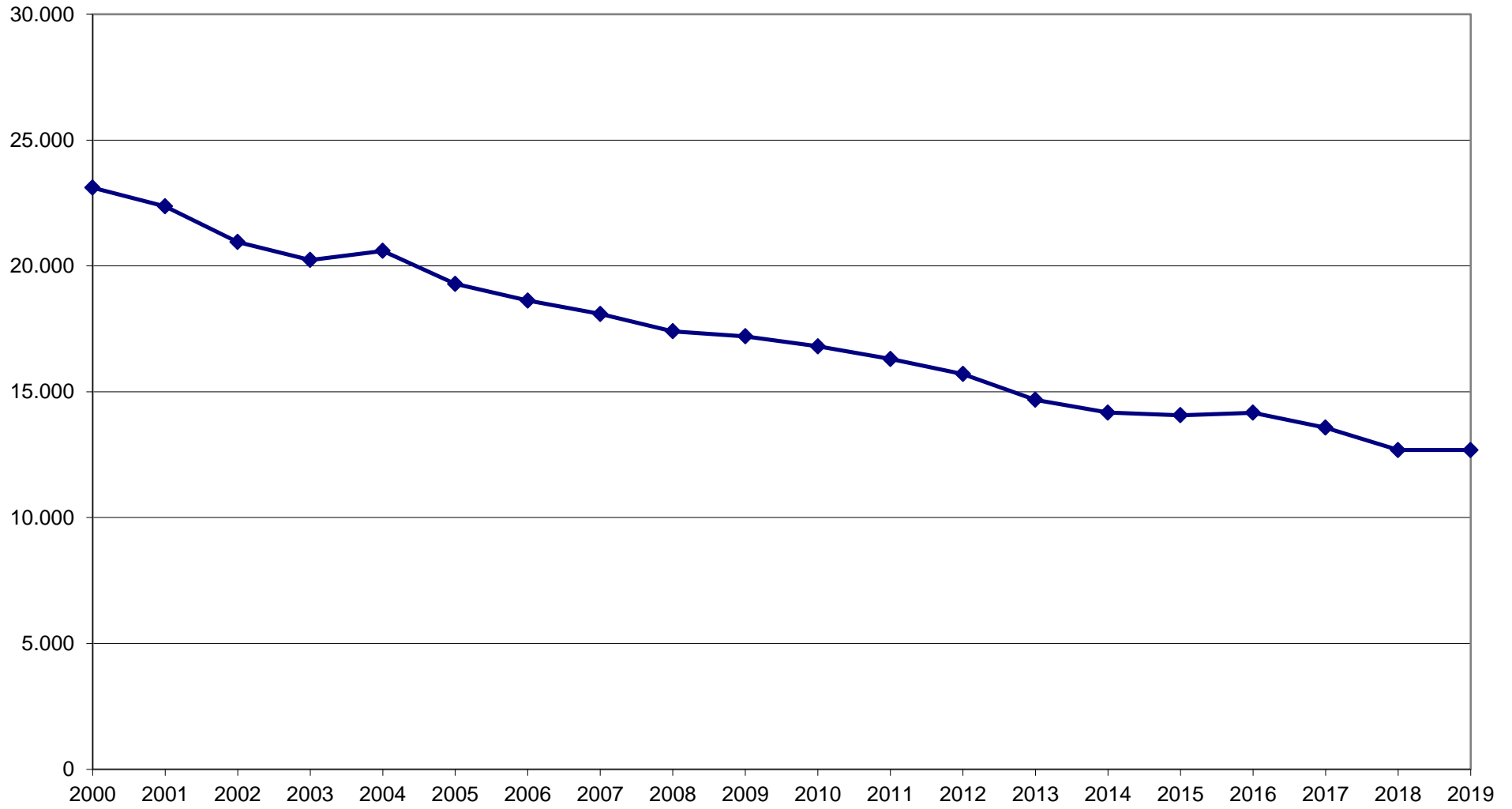


Kindertaufen in der Nordkirche (2000-2019)



Kindertaufen 2000 bis 2019

Kirchenkreise	2000	2001	2002	2003	2004	2005	2006	2007	2008	2009	2010	2011	2012	2013	2014	2015	2016	2017	2018	2019
Altholstein	2.289	2.139	2.022	2.005	1.952	1.714	1.638	1.713	1.728	1.637	1.610	1.528	1.402	1.414	1.340	1.395	1.327	1.167	1.131	1.179
Dithmarschen	1.060	1.019	910	913	1.013	846	867	825	743	683	714	707	688	613	579	567	544	558	513	515
Nordfriesland	1.485	1.394	1.288	1.210	1.209	1.086	1.133	1.030	1.005	923	979	891	875	859	805	882	884	929	845	837
Ostholstein	1.165	1.119	1.109	1.059	1.050	1.002	1.040	920	911	927	809	860	771	776	713	722	764	744	752	712
Plön-Segeberg	1.423	1.487	1.370	1.266	1.300	1.307	1.278	1.249	1.089	1.123	1.125	1.140	1.030	955	977	1.002	965	913	935	877
Rantzeu-Münsterdorf	1.251	1.289	1.164	1.025	1.252	979	886	838	852	715	801	757	804	662	642	692	628	611	550	555
Rendsburg-Eckernförde	1.509	1.443	1.385	1.318	1.256	1.286	1.126	1.115	1.150	1.118	1.103	1.009	976	893	888	819	894	807	752	730
Schleswig-Flensburg	1.898	1.872	1.641	1.663	1.565	1.473	1.498	1.341	1.299	1.314	1.204	1.294	1.235	1.213	1.178	1.043	1.164	1.162	1.076	1.027
Hamburg-Ost	4.814	4.592	4.386	4.227	4.079	4.026	3.803	3.638	3.616	3.703	3.398	3.285	3.250	3.099	2.981	2.780	2.789	2.783	2.476	2.571
Hamburg-West/Südholstein	2.209	2.132	1.969	1.880	1.986	2.026	1.909	1.899	1.904	1.829	1.767	1.904	1.713	1.516	1.459	1.435	1.447	1.395	1.335	1.404
Lübeck-Lauenburg	1.838	1.658	1.536	1.560	1.755	1.577	1.437	1.475	1.314	1.330	1.287	1.140	1.138	1.155	1.048	1.177	1.188	1.062	1.026	1.012
Mecklenburg	1.443	1.466	1.454	1.436	1.439	1.538	1.392	1.437	1.359	1.342	1.286	1.371	1.229	1.132	1.103	1.142	1.189	1.087	892	884
Pommern	728	758	717	676	741	426	615	611	431	559	724	419	595	392	460	409	382	356	401	382
Nordkirche insgesamt	23.112	22.368	20.951	20.238	20.597	19.286	18.622	18.091	17.401	17.203	16.807	16.305	15.706	14.679	14.173	14.065	14.165	13.574	12.684	12.685